



## WMO Climate Watch Systems

---

**Omar Baddour**  
Chief Data Management Applications  
Observation and Information System Department  
WMO, Geneva  
[obaddour@wmo.int](mailto:obaddour@wmo.int)

---



Climate anomalies can occur over large geographical scale with a long lasting lifetime from a week to a season. This map shows a list of such extremes which occurred during 2009. Such extreme conditions can bring heavy and extended precipitations or extended episodes of deficits, heat waves, cold waves, etc. all having serious potential negative impacts on sectors

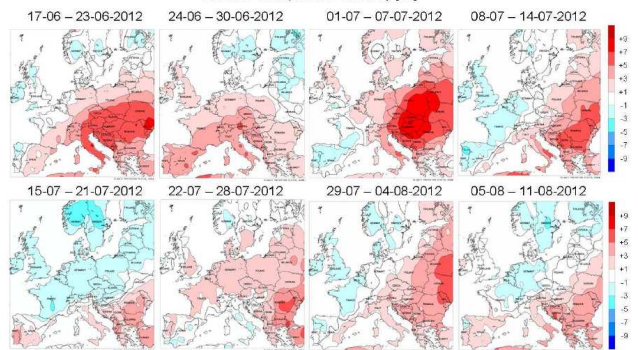
Some of these extremes are expected to be more frequent and more intense as a result of long term climate change.

A climate Watch system is therefore such system that enables providing **climate advisories including alerts** on the geographical, time frame and the magnitude of these anomalies

Next slide on the outline



EUROPE Temperature Anomaly [°C]

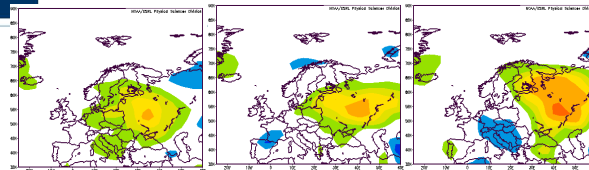




16-20 July 2010

21-25 July 2010

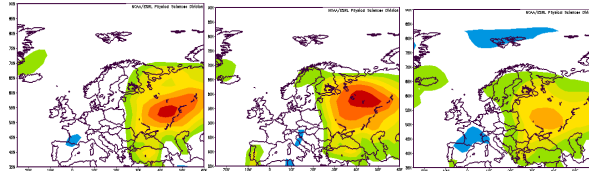
26-31 July 2010



1-5 August 2010

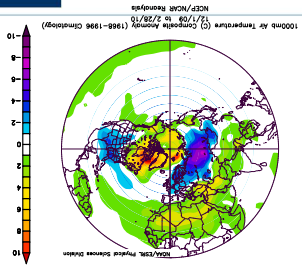
6-10 August 2010

11-15 August 2010



Original format in .eps

---



ERROR: typecheck  
OFFENDING COMMAND: setmatrix

STACK:

1  
[0.0 1.0 1.0 0.0 0.0 0.92125 ]