

Seasonal forecast from SPECS statistical system

(<http://climexp.knmi.nl/specs.cgi>)

Jonathan Eden¹, Geert-Jan van Oldenborgh¹,
Ed Hawkins², Emma Suckling²

¹Royal Netherlands Meteorological Institute (KNMI), De Bilt, the Netherlands

²NCAS-Climate, Department of Meteorology, University of Reading, Reading, UK

Forecasts for DJF 2015/2016

MedCOF5 - Marrakech - 23rd ~ 24rd November 2015 – D.Decremer

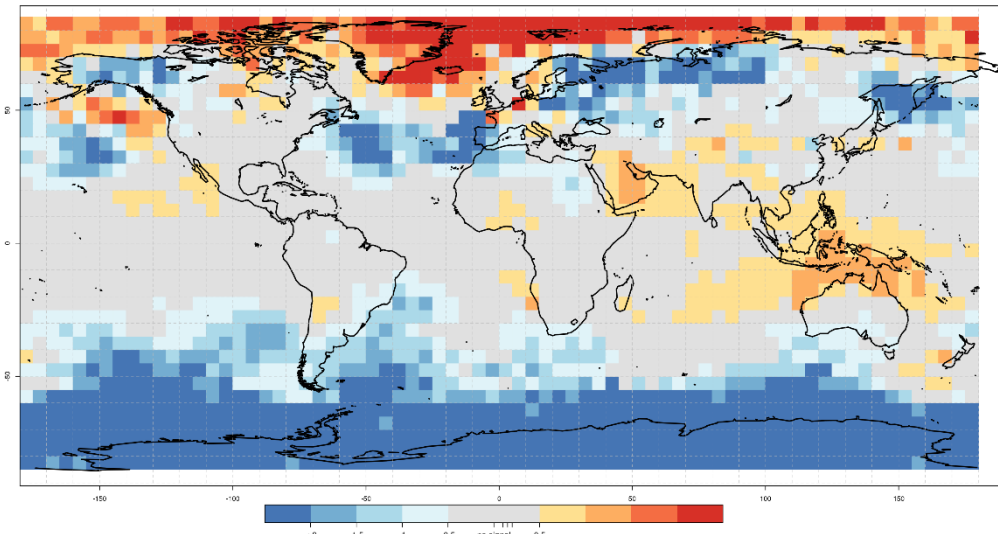


Royal Netherlands
Meteorological Institute
Ministry of Infrastructure and the
Environment

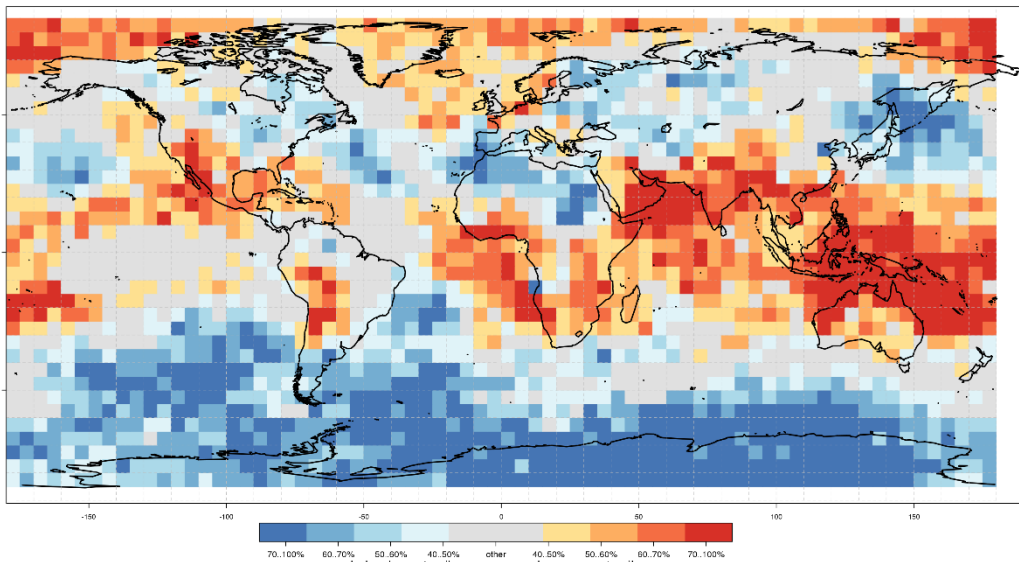
Mean Sea-level pressure

Ensemble mean anomaly

SPECS Empirical Seasonal Forecast: mean sea level pressure (DJF 2015)
Ensemble mean anomaly (wrt 1981-2010)
Ensemble size: 51 | Forecast generation date: 11/11/2015

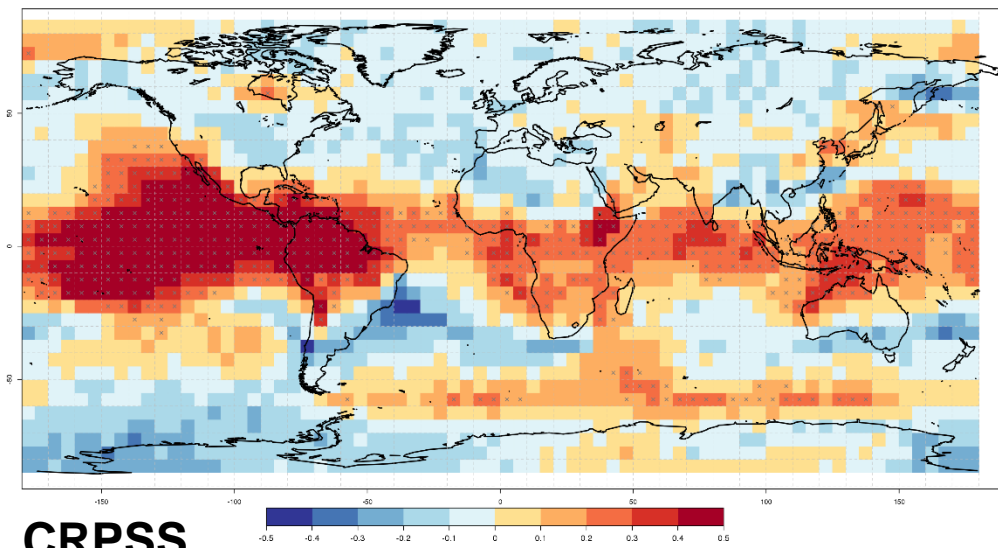


SPECS Empirical Seasonal Forecast: mean sea level pressure (DJF 2015)
Prob(most likely category of mean sea level pressure)
Ensemble size: 51 | Forecast generation date: 11/11/2015



Tercile probabilities

SPECS Empirical Seasonal Forecast: mean sea level pressure (DJF 2015)
CRPSS between hindcast ensemble and climatology (1961-present)
Ensemble size: 51 | Forecast generation date: 11/11/2015 | Hatched where significant at 95% level

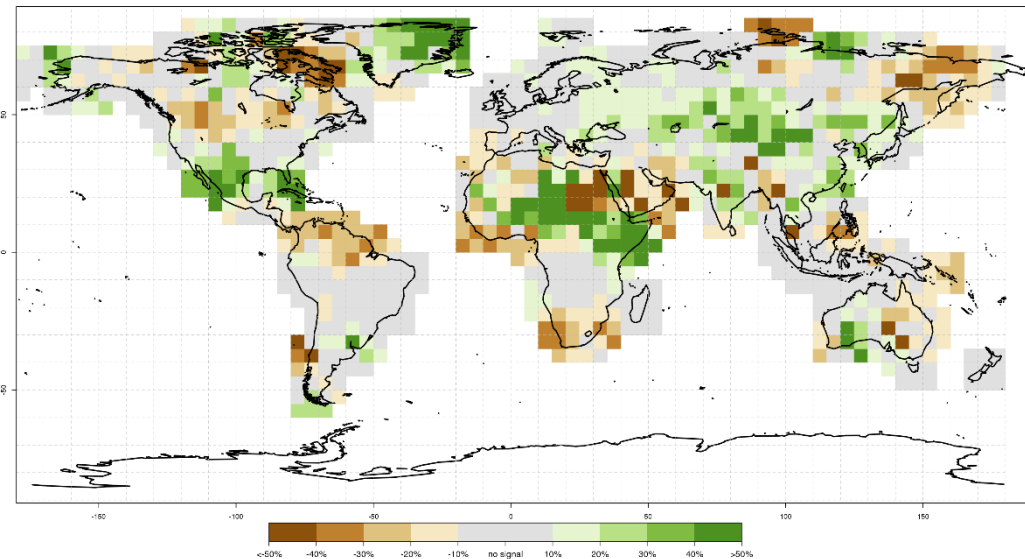


CRPSS

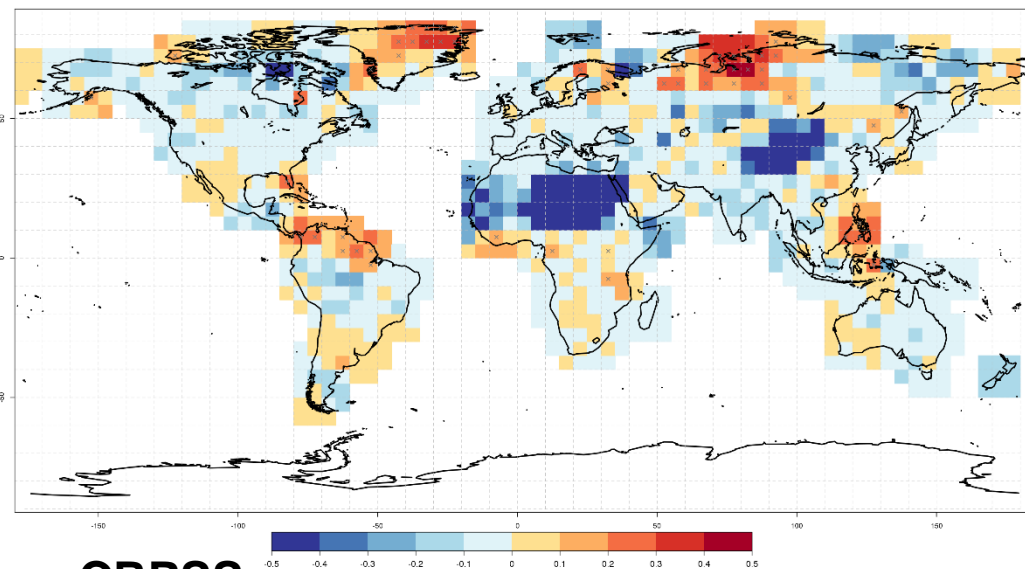
Precipitation

Ensemble mean anomaly

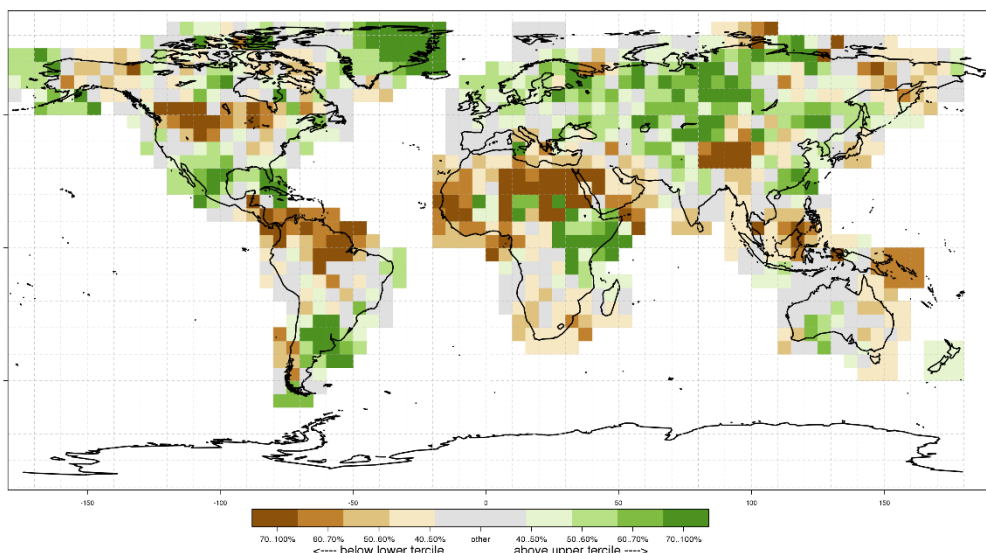
SPECS Empirical Seasonal Forecast: precipitation (DJF 2015)
 Ensemble mean anomaly (wrt 1981-2010)
 Ensemble size: 51 | Forecast generation date: 11/11/2015



SPECS Empirical Seasonal Forecast: precipitation (DJF 2015)
 CRPSS between hindcast ensemble and climatology (1961-present)
 Ensemble size: 51 | Forecast generation date: 11/11/2015 | Hatched where significant at 5% level



SPECS Empirical Seasonal Forecast: precipitation (DJF 2015)
 Prob(most likely category of precipitation)
 Ensemble size: 51 | Forecast generation date: 11/11/2015



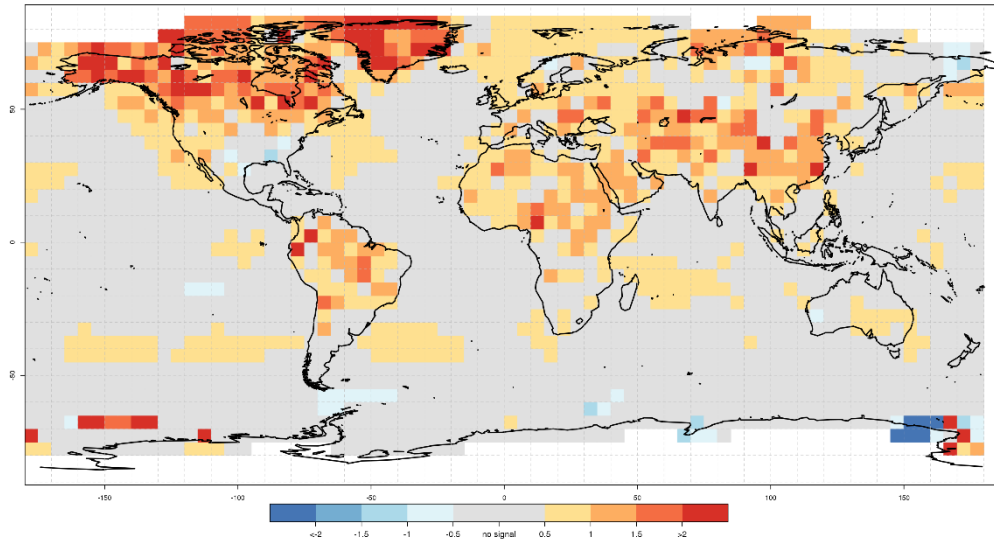
Tercile probabilities

CRPSS

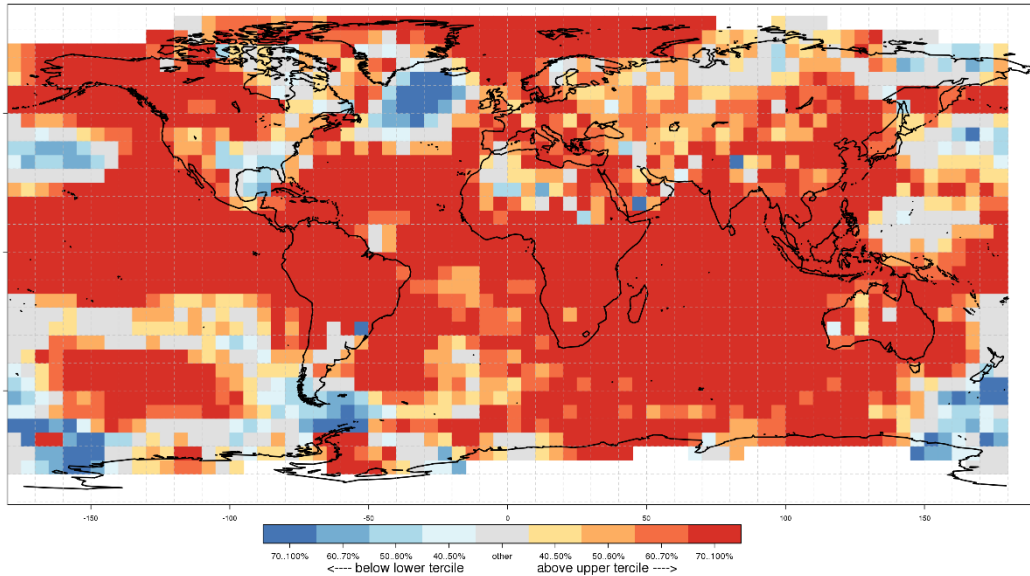
Surface Temperature

Ensemble mean anomaly

SPECS Empirical Seasonal Forecast: surface air temperature (DJF 2015)
Ensemble mean anomaly (wrt 1981-2010)
Ensemble size: 51 | Forecast generation date: 11/11/2015

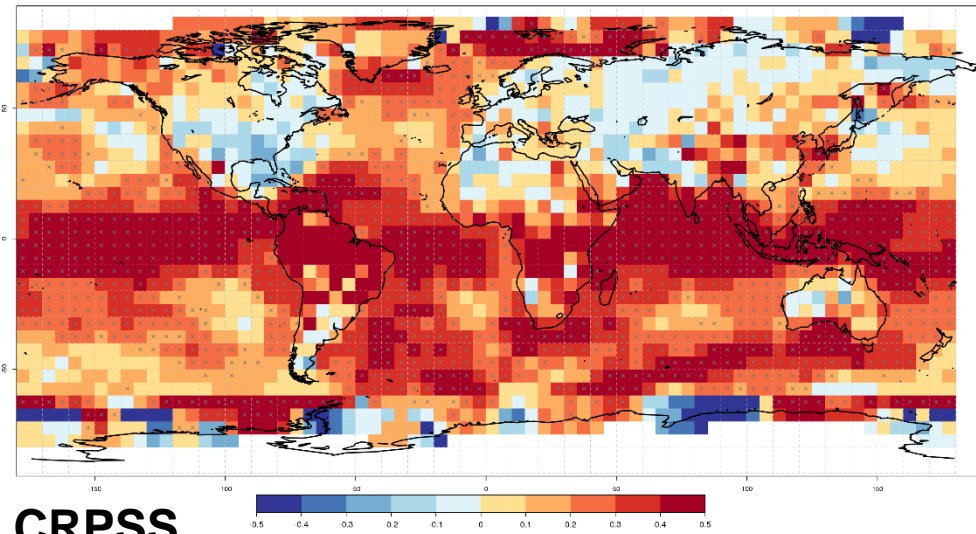


SPECS Empirical Seasonal Forecast: surface air temperature (DJF 2015)
Prob(most likely category of surface air temperature)
Ensemble size: 51 | Forecast generation date: 11/11/2015



Tercile probabilities

SPECS Empirical Seasonal Forecast: surface air temperature (DJF 2015)
CRPSS between hindcast ensemble and climatology (1961-present)
Ensemble size: 51 | Forecast generation date: 11/11/2015 | Hatched where significant at 5% level



CRPSS

Conclusions

- Mslp shows indications of NAO⁻, but skill is low
- Precipitation shows slight possibility for wet northern Europe + Greece and Caucasus region
- Overall, hotter than usual temperatures over all Europe

➔ Hot and possibly wet winter

